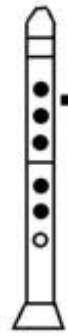
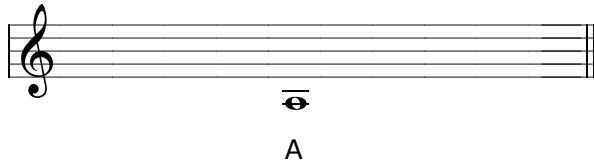


## 40. Das tiefe A



## 41. Übungen

Eight musical exercises labeled a. through h. are arranged in two rows. Each exercise is on a single staff with a treble clef and a common time signature (C). Exercises b, c, and d have repeat signs. Exercises e, f, g, and h have repeat signs and end with a double bar line.

Alle außer a. auch gebunden. Denke Dir selbst noch andere Möglichkeiten aus.

## 42. November-Lied

*langsam*

P. Sch.

A musical score for 'November-Lied' in 4/4 time. It consists of three systems of two staves each. The top staff is in treble clef and the bottom staff is in bass clef. The music features a melody with slurs and a bass line with accidentals (sharps).

Spiele die letzte Viertelnote, die nicht angebunden ist, nicht lustig, sondern etwas traurig.